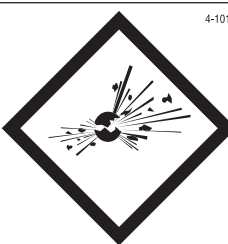




Gel-Mate™

SEALED VALVE REGULATED LEAD-ACID (SVRLA) GELLED ELECTROLYTE BATTERIES

Congratulations on your choice of the new Deka industrial battery. The Deka industrial battery combines all the benefits of maintenance-free gel batteries with an on-board, capacity matching charger. Designed with East Penn engineering technology and built by master battery craftsmen according to strict quality assurance guidelines, Deka industrial battery batteries are the finest available to meet today's material handling requirements. Deka precision construction provides new equipment performance throughout a long life. These batteries have been inspected prior to shipment to ensure they meet your specifications as ordered. By following the installation and operation instructions, you will be ensuring optimum life and performance of your new Deka industrial battery.



4-1014

DANGER Contains: Lead, Sulfuric Acid (Electrolyte), Lead Compounds.

Harmful if swallowed, inhaled, or in contact with skin. Acid causes severe skin burns and eye damage. May damage fertility or the unborn child if ingested or inhaled.

May cause harm to breast-fed children.

May cause cancer if ingested or inhaled.

Causes skin irritation, serious eye damage.

Contact with internal components may cause irritation or severe burns.

Causes damage to central nervous system, blood and kidneys through prolonged or repeated exposure if ingested or inhaled.

Irritating to eyes, respiratory system, and skin.

May form explosive air/gas mixture during charging.

Extremely flammable gas (hydrogen).

Explosive, fire, blast or projection hazard.

Obtain special instructions before use.

Do not handle until all safety precautions have been read and understood.

Wash thoroughly after handling.

Do not eat drink or smoke when using this product.

Avoid contact during pregnancy/while nursing.

Wear protective gloves/protective clothing, eye protection/face protection.

Use only outdoors or in a well-ventilated area.

Avoid contact with internal acid.

Do not breathe dust/fume/gas/mist/vapors/spray.

Keep away from heat/sparks/open flames/hot surfaces. No smoking.

IF SWALLOWED OR CONSUMED: rinse mouth. Do NOT induce vomiting. Call a poison center/doctor if you feel unwell.

IF ON CLOTHING OR SKIN (or hair): Remove/Take off immediately all contaminated clothing and wash it before reuse. Rinse skin with water/shower.

IF INHALED: Remove person to fresh air and keep comfortable for breathing. Immediately call a POISON CENTER or doctor/physician.

IF IN EYES: Rinse cautiously with water for several minutes. Remove contact lenses, if present and easy to do. Continue rinsing.

If exposed/concerned, or if you feel unwell seek medical attention/advice.

Store locked up, in a well-ventilated area, in accordance with local and national regulation.

Dispose of contents/container in accordance with local and national regulation.

Keep out of reach of children.



PROPOSITION 65 WARNING: Battery posts, terminals and related accessories contain lead and lead compounds, chemicals known to the State of California to cause cancer and reproductive harm. Batteries also contain other chemicals known to the State of California to cause cancer. **WASH HANDS AFTER HANDLING.**

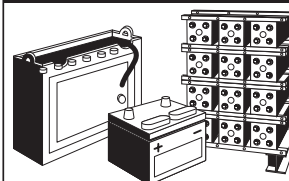
WARNING: Risk of fire, explosion or burns. Do not disassemble or incinerate. Not recommended for inverted use. Follow product charging instructions. **High Voltage:** Risk of shock. Do not touch uninsulated terminals or connectors.

Keep Vent Caps Tightly in Place

Manufactured by: East Penn Manufacturing Co., 102 Deka Road, Lyon Station, PA 19536 USA 610-682-6361

**Lead Acid
Battery
Electrolyte
(Sulfuric Acid)**

BATTERIES AND RELATED PARTS CONTAIN LEAD



WASH HANDS AFTER HANDLING!

CALIFORNIA PROPOSITION 65 WARNING: Batteries, battery posts, terminals and related accessories contain lead and lead compounds, and other chemicals known to the State of California to cause cancer and birth defects or other reproductive harm.

California Proposition 65 Workplace Warning Sign
Must be posted in workplace near batteries.

7/04

INSTALLATION INSTRUCTIONS

WARNING: Charging shall be performed by using only the supplied on-board charger for Gel-Mate. The valve-regulated vent should not be removed. Removal of the vent will adversely affect the battery's life and performance. The battery's warranty will be void if these guidelines are not followed.

1. Upon receipt of the Gel-Mate, if there are signs of rough handling, or exposed electrolyte, or loose or missing vent(s), file a claim with the carrier and advise your East Penn representative.
2. Make sure that the Gel-Mate "SERVICE WEIGHT", which is stamped below the lifting eye in the steel tray, falls within the battery weight range shown on the truck nameplate. East Penn Manufacturing Co., Inc. cannot be responsible for determining that the battery weight is sufficient to counterbalance your particular truck.
3. The batteries should receive a charge prior to placing the Gel-Mate into service. The batteries shall be charged by using the supplied on-board charger. The charge is complete when the charger automatically terminates. No other charger should be used. Doing so will void the warranty.
4. The batteries shall only be charged when the vehicle battery discharge indicator is below 50% state of discharge. The charge shall continue until the charger terminates the charge automatically. The steel tray cover or the truck compartment should be kept open during the entire duration of the charge.
5. Measuring the open circuit voltage provides a way to determine the state of charge of the batteries. The open circuit voltage shall be taken with a voltmeter. To confirm 100% State of Charge, voltage measurements should be taken no earlier than 4 hours after charge.
6. EPM recommends when lifting a Gel-Mate that an insulated beam be used. Also, make certain that the lifting hooks are the correct size and are properly aligned with the holes in the lifting ears of the tray prior to hoisting the Gel-Mate.

STATE OF CHARGE VS. OPEN CIRCUIT

% Charge	Open Circuit Voltage
100.....	2.16-2.20
75.....	2.12
50.....	2.07
25.....	2.01
0.....	1.97

OPERATOR INSTRUCTIONS

SEALED VALVE REGULATED LEAD-ACID (SVRLA) GELLED ELECTROLYTE BATTERIES

WARNING: Always wear safety glasses when working around batteries! Keep sparks and flames away! The valve regulated pressure relief valve should never be removed or loosened!

1. The top of the batteries should be kept clean and dry at all times. Simply clean the tops of the batteries with a damp cloth. The valve regulated vent and shroud shall remain on the batteries at all times.
2. The cables and connectors should be inspected daily for exposed copper wires, frayed or cracked insulation, loose connections, or pitted contacts, and repaired as required.
3. Be especially careful to keep metallic objects off the top of the batteries. Any metal touching two or more connectors may cause a short circuit resulting in an arc or spark may result in an explosive ignition.

TYPE	PLATES PER CELL	5	7	9	11	13	15
G75	6 Hr A.H. Rating	150	225	300	375	450	525
G105	6 Hr A.H. Rating	210	315	420	525	—	—

PROPOSITION 65 WARNING: Battery posts, terminals and related accessories contain lead and lead compounds, chemicals known to the State of California to cause cancer and reproductive harm. Batteries also contain other chemicals known to the State of California to cause cancer. **WASH HANDS AFTER HANDLING.**



Order Hotline: 610-682-3260 motivepowersales@dekabatteries.com



East Penn Manufacturing Co.

Lyon Station, PA 19536-0147

Phone: 610-682-6361

Fax: 610-682-4781

www.dekabatteries.com

E.P.M. Form No. 2716 08/23

© 2023 by EPM Printed in U.S.A.

All data subject to change without notice. No part of this document may be copied or reproduced, electronically or mechanically, without written permission from the company.