



East Penn Manufacturing is an authorized distributor and seller of

Duracell® and Procell® Batteries

POWER YOUR
PROFITABILITY

PROCELL®
BY DURACELL®



TURN BATTERIES FROM A COST CENTER INTO A COST SAVER

Procell understands how critical it is for professional end-users to drive the profitability of their businesses. When it comes to batteries, this can be achieved through minimizing costly battery replacements.

By conducting intensive device testing and analysis in our labs, Procell has discovered that a way to dramatically extend alkaline battery life and cut replacement costs is to engineer device-specific industrial alkaline batteries, each with unique power profiles.

THE WORLD'S FIRST DUAL PORTFOLIO OF PROFESSIONAL BATTERIES

PROCELL INTENSE POWER

- Specifically engineered to deliver precise pulses of energy while lasting longer* in high-drain professional device**.

PROCELL CONSTANT POWER

- Completely redesigned for longer lasting*, consistent performance

By selecting the right battery to match the power needs of your commercial device, you can make all your batteries last longer*, so you replace them less often.



* vs. prior Procell AA, AAA, C, D, and 9V batteries

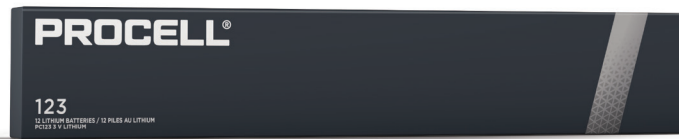
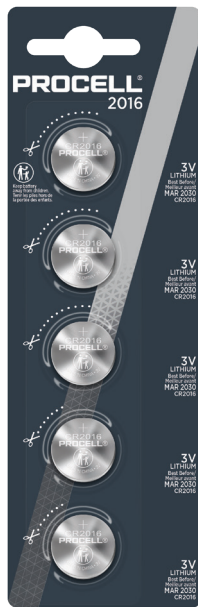
** High-drain devices typically operate motors, pumps, and mechanisms that create motion or dispense.

PART NUMBER	BATTERY TYPE	BATTERY VOLTAGE	BATTERY CHEMISTRY	PACKAGING	MASTER CASE QUANTITY
PROCELL INTENSE - BULK PACK					
PX1300	D	1.5	Alkaline	12 per box	1 box
PX1400	C	1.5	Alkaline	12 per box	1 box
PX1500	AA	1.5	Alkaline	24 per box	1 box
PX2400	AAA	1.5	Alkaline	24 per box	1 box
PX1604	9V	9.0	Alkaline	12 per box	1 box

PART NUMBER	BATTERY TYPE	BATTERY VOLTAGE	BATTERY CHEMISTRY	PACKAGING	MASTER CASE QUANTITY
PROCELL CONSTANT - BULK PACK					
PC1300	D	1.5	Alkaline	12 per box	1 box
PC1400	C	1.5	Alkaline	12 per box	1 box
PC1500BKD	AA	1.5	Alkaline	24 per box	1 box
PC2400BKD	AAA	1.5	Alkaline	24 per box	1 box
PC1604BKD	9V	9.0	Alkaline	12 per box	1 box

POWER YOUR
PROFITABILITY

PROCELL®
BY DURACELL®



PART NUMBER	BATTERY TYPE	BATTERY VOLTAGE	BATTERY CHEMISTRY	BATTERIES PER PACKAGING	PACKAGING	MASTER CASE QUANTITY
PROCELL SPECIALTY BATTERIES						
PL123BKD	CR123	3.0	Lithium	-	12 per box	1 box
PCCR2	CR2	3.0	Lithium	-	12 per box	1 box
PC2016	CR2016	3.0	Lithium	5	clamshell	4 clamshells
PC2025	CR2025	3.0	Lithium	5	clamshell	4 clamshells
PC2032	CR2032	3.0	Lithium	5	clamshell	4 clamshells

©2021 Duracell Industrial Operation, Inc., Bethel, CT 06801. DURACELL is a registered trademark Duracell U.S. Operations, Inc., used under license. All rights reserved.

TRUST IS POWER

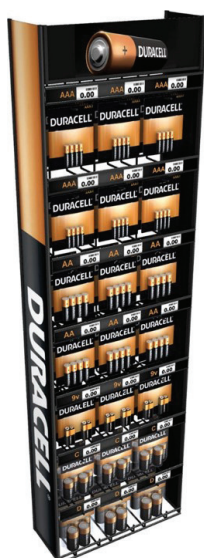
DURACELL®



PART NUMBER	BATTERY TYPE	BATTERY VOLTAGE	BATTERY CHEMISTRY	BATTERIES PER PACKAGING	PACKAGING	MASTER CASE QUANTITY
DURACELL SPECIALTY BATTERIES - RETAIL						
DL1616BPK	CR1616	3.0	Lithium	1	clamshell	6 clamshells
DL1620BPK	CR1620	3.0	Lithium	1	clamshell	6 clamshells
DL1632BPK	CR1632	3.0	Lithium	1	clamshell	6 clamshells
DL2016BPK	CR2016	3.0	Lithium	1	clamshell	6 clamshells
DL2025BPK	CR2025	3.0	Lithium	1	clamshell	6 clamshells
DL2032B2PK	CR2032	3.0	Lithium	2	clamshell	6 clamshells
DL2430BPK	CR2430	3.0	Lithium	1	clamshell	6 clamshells
DL2450BPK	CR2450	3.0	Lithium	1	clamshell	6 clamshells
DL1/3NBPK	1/3N	3.0	Lithium	1	clamshell	6 clamshells
DLCR2BPK	CR2	3.0	Lithium	1	clamshell	6 clamshells
DL123AB2PK	CR123	3.0	Lithium	2	clamshell	6 clamshells
DL223ABPK	CR223	6.0	Lithium	1	clamshell	6 clamshells
DL245BPK	CR245	6.0	Lithium	1	clamshell	6 clamshells
PX28LBPK	28L	6.0	Lithium	1	clamshell	6 clamshells
MN21B2PK	21	12.0	Alkaline	2	clamshell	6 clamshells
MN27BPK	27	12.0	Alkaline	1	clamshell	6 clamshells
MN9100B2PK	N	1.5	Alkaline	2	clamshell	6 clamshells
MX2500B2PK	AAAA	1.5	Alkaline	2	clamshell	6 clamshells
PX76A675PK	76A/675	1.5	Alkaline	1	clamshell	6 clamshells
D303/357PK	303/357/76S	1.5	Silver Oxide	1	clamshell	6 clamshells
MN908	908	6.0	Alkaline	-	1 per box	6 boxes

TRUST IS POWER

DURACELL®



PART NUMBER	BATTERY TYPE	BATTERY VOLTAGE	BATTERY CHEMISTRY	BATTERIES PER PACKAGING	PACKAGING	MASTER CASE QUANTITY
DURACELL COPPERTOP - RETAIL						
MN1300B2Z	D	1.5	Alkaline	2	clamshell	48 clamshells
MN1300R4Z	D	1.5	Alkaline	4	clamshell	12 clamshells
MN1400B2Z	C	1.5	Alkaline	2	clamshell	48 clamshells
MN1400R4Z	C	1.5	Alkaline	4	clamshell	18 clamshells
MN1500B4Z	AA	1.5	Alkaline	4	clamshell	56 clamshells
MN1500B8Z	AA	1.5	Alkaline	8	clamshell	48 clamshells
MN2400B4Z	AAA	1.5	Alkaline	4	clamshell	54 clamshells
MN2400B8Z	AAA	1.5	Alkaline	8	clamshell	40 clamshells
MN1604B1Z	9V	9.0	Alkaline	1	clamshell	48 clamshells
MN1604B2Z	9V	9.0	Alkaline	2	clamshell	48 clamshells

PART NUMBER	BATTERY TYPE	BATTERY VOLTAGE	BATTERY CHEMISTRY	PACKAGING	MASTER CASE QUANTITY
DURACELL COPPERTOP - BULK PACK					
MN1300	D	1.5	Alkaline	12 per box	1 box
MN1400	C	1.5	Alkaline	12 per box	1 box
MN1500BKD	AA	1.5	Alkaline	24 per box	1 box
MN2400BKD	AAA	1.5	Alkaline	24 per box	1 box
MN1604BKD	9V	9.0	Alkaline	12 per box	1 box

PART NUMBER	DISPLAY DESCRIPTION	MASTER CARTON QTY
RETAIL DISPLAYS*		
9000019	ROLLCART, TWO-SIDED 3-WIDE DURA	1
9000027	RACK, SIDEKICK/WING DURA	1
9000014	RACK, EIGHT PEG DURA	1
6103457	RACK, COMBO BULK & RETAIL DURA	1

*subject to availability and change without notice.

©2020 DURACELL, Bethel, CT 06801. DURACELL is a registered trademark of Duracell U.S. Operations, Inc., used under license. All rights reserved.

Authorized distributor and seller



East Penn Manufacturing Co. Lyon Station, PA 19536-0147 Phone: 610-682-6361 Fax: 610-682-4781

www.eastpennmanufacturing.com

E.P.M. Form No. 2552 REV. 06/22 © 2022 by EPM Printed in U.S.A.

All data subject to change without notice. No part of this document may be copied or reproduced, electronically or mechanically, without written permission from the company.